

DH-IPC-HFW5241T-AS-LED

2MP WDR Bullet AI Network Camera



Dahua AI series products adopt the most advanced AI technologies, including deep learning algorithms that primarily target people and vehicles, which provides higher flexibility and accuracy for end-users. This enables the Dahua AI series to offer various advanced applications such as Face Recognition, ANPR, Metadata, People Counting, traffic data statistics, etc. The complete lineup of Dahua AI includes network (PTZ) cameras, network video recorders, servers, and platform management products. Beyond seeing the world, the power of AI allows devices to perceive the environment and understand the world in a better way.

System Overview

Pro AI series contains Face Capture, Perimeter Protection and People Counting functions. Powered by deep-learning Artificial Intelligence algorithms, significantly improved accuracy. Meanwhile, the series features starlight and smart IR technology. This series fully protected from dust and water, certified to IP67 standard.

Functions

Face Capture

Face capture is a software application that automatically captures faces from within a digital image or a video frame from a video source. Dahua cameras use advanced deep learning algorithms and are trained by a large number of face data sources, enabling the camera to locate faces quickly and accurately from the video source and capture facial images.

Face Attributes

Through the use of deep learning algorithms to analyze facial images, Dahua cameras can extract six facial attributes from each frame, including Age, Gender, Expression (Jolly/Surprise/Normal/Rage/Sad/Disgusted/Confused/Frightened), Glasses, Mouth Mask, Moustache & Beard. Customers can acquire data of interest via face attributes statistics.

Perimeter Protection

Dahua's Perimeter Protection functions significantly improved accuracy. Perimeter Protection reduces false alarms and decreases pixel count requirements for object detection. Perimeter Protection features custom tripwires based on object type for automation in limited access areas such as pedestrian or vehicle-only zones. This combination of advanced AI analytics and real-time alerts to a desktop or to a mobile

- 1/2.8" 2Megapixel progressive scan STARVIS™ CMOS
- H.265&H.264 triple-stream encoding
- 25/30fps@1080P(1920×1080)
- WDR(120dB), Day/Night(Electronic), 3D DNR, AWB, AGC, BLC
- Multiple network monitoring: Web viewer, CMS(DSS/PSS) & DMSS
- 2.8mm fixed lens (3.6mm, 6mm, 8mm optional)
- 1/1 Alarm in/out, 1/1 audio in/out
- Max. LEDs Length 23m
- Micro SD memory, IP67



client reduces system requirements and resources resulting in greater surveillance system efficiency.

People Counting

People Counting function uses advanced image processing technology to capture depth information from within images. The camera pairs this information with deep learning algorithms to analyze and detect human bodies and track target objects in real time. The camera provides statistics for separate individuals' entrance and exit with up to 95% counting accuracy.

Full-color Starlight

The camera adopts F1.6 large aperture lens and 1/2.8" high performance sensor. With higher amount of absorbed light and advanced image processing algorithm, the camera presents an impressive lowlight performance with an exceptional balance between noise reduction and the blur of moving object.

Warm Supplemental lights

With two warm supplemental LED lights, the camera is able to provide a colorful and vivid image even in total darkness. It also provides visible By default, the camera is set to smart light mode, in which the camera can automatically adjust the exposure time and light sensitivity simultaneously to avoid overexposing of the objects in the image center. Also, the sensitivity and intensity of the LED lights can be remotely controlled by OSD menu.

Protection(IP67, wide voltage)

The camera allows for ±30% input voltage tolerance, suitable for the most unstable conditions for outdoor applications. Its 6KV lightning rating provides effective protection for both the camera and its structure against lightning. Subjected and certified to rigorous dust and immersion tests (IP67), the camera is the choice for installation in even the most unforgiving environments.



Technical Specification					
Camera					
Image Sensor	1/2.8" 2Megapixel progressive scan STARVIS™ CMOS				
Effective Pixels	1920(H) x 1080(V)				
RAM/ROM	512MB/128MB				
Scanning System	Progressive				
Electronic Shutter Speed	Auto/Manual, 1/3~1/100000s				
Minimum Illumination	0.002Lux/F1.6 (Color,1/3s,30IRE) 0.012Lux/F1.6 (Color,1/30s,30IRE)				
LED Distance	Distance up to 23m (75ft)				
LED On/Off Control	Auto/ Manual				
LEDs	2				
Lens					
Lens Type	Fixed				
Mount Type	Board-in				
Focal Length	2.8mm,3.6mm,6mm,8mm				
Max. Aperture	F1.6				
Angle of View	H: 106°, V:57°/H: 87°, V:46°/H: 53°, V:30°/H: 41°,V:23°				
Optical Zoom	N/A				
Aperture Type	Fixed				
Close Focus Distance	0.6m(1.97ft)/1.2m(3.94ft)/2.5m(8.20ft)/4m(13.12ft)				
DORI Distance	Lens	Detect	Observe	Recognize	Identify
	2.8mm	39m(128ft)	15m(49ft)	8m(26ft)	4m(13ft)
	3.6mm	55m(180ft)	22m(72ft)	11m(36ft)	6m(20ft)
	6mm	83m(272ft)	33m(108ft)	17m(56ft)	8m(26ft)
	8mm	110m(361ft)	44m(144ft)	22m(72ft)	11m(36ft)
Pan/Tilt/Rotation					
Pan/Tilt/Rotation Range	Pan:0°~360°; Tilt:0°~90°; Rotation:0°~360°				
Artificial Intelligence					
Face Capture	Support face image capture				
Face Attributes	Support 6 kinds of face attributes extraction: Age, Gender, Expression (Jolly/Surprise/Normal/Rage/Sad/Disgusted/Confused/Frightened), Glasses, Mouth Mask, Moustache & Beard				
Perimeter Protection	Tripwire, Intrusion (Human & Vehicle classification)				
People Counting	Line crossing people counting, Region people counting				
General Intelligence					
Event Trigger	Motion detection, Video tampering, Scene changing, Network disconnection, IP address conflict, Illegal Access, Storage anomaly				
General Intelligence	Object Abandoned/Missing				
Video					
Compression	H.265+/H.265/H.264+/H.264/H.264B/H.264H/MJPEG(sub stream)				
Streaming Capability	3 Streams				
Resolution	1080P(1920×1080)/1.3M(1280×960)/720P(1280×720)/D1(704×576/704×480)/VGA(640×480)/CIF(352×288/352×240)				
Frame Rate	Main Stream: 1080P(1~25/30fps) Sub Stream: D1(1~25/30fps) Third Stream: 1080P(1~6fps)				
Bit Rate Control	CBR/VBR				
Bit Rate	H.264: 32~ 8192Kbps H.265: 19~ 7424Kbps				
Day/Night	Day/Night: Electronic Auto/ Color / B/W				
BLC Mode	BLC / HLC / WDR(120dB)				
White Balance	Auto/Natural/Street Lamp/Outdoor/Manual				
Gain Control	Auto/Manual				
Noise Reduction	3D DNR				
Motion Detetion	Off / On (4 Zone, Rectangle)				
Region of Interest	Off / On (4 Zone)				
Electronic Image Stabilization (EIS)	N/A				
Smart IR	Support				
Defog	Support				
Digital Zoom	N/A				
Flip	0°/90°/180°/270°				
Mirror	Off / On				
Privacy Masking	Off / On (4 Area, Rectangle)				
Audio					
Compression	G.711a/ G.711Mu/ AAC/ G.726/G.723				
Network					
Ethernet	RJ-45 (10/100Base-T)				
Protocol	HTTP; TCP; ARP; RTSP; RTP; UDP; RTCP;SMTP; FTP; DHCP; DNS; DDNS; PPPoE; IPv4/v6; SNMP;QoS; UPnP;NTP				
Interoperability	ONVIF(Profile S/Profile G), CGI,Milstone,Genetec,P2P				
Streaming Method	Unicast / Multicast				
Max. User Access	20 Users				
Edge Storage	NAS FTP Mirco SD card 256GB				
Web Viewer	IE(versions newer than IE8), Chrome, Firefox, Safari(versions newer than Safari 12)				
Management Software	Smart PSS, DSS, P2P				
Smart Phone	iOS, Android				
Certifications					
Certifications	CE-LVD:EN60950-1 CE-EMC:Electromagnetic Compatibility Directive 2014/30/EU FCC:47 CFR FCC Part 15, Subpart B UL/CUL: UL60950-1 CAN/CSA C22.2 No.60950-1-07				

Interface

Video Interface	N/A
Audio Interface	1/1 channel In/Out
RS485	N/A
Alarm	1 channel In: 5mA 5VDC 1 channel Out: 300mA 12VDC

Electrical

Power Supply	DC12V(±30%), PoE(802.3af)(Class 0)
Power Consumption	DC12V:1.7W 6W(LED on) PoE:2.4W 7W(LED on)

Environmental

Operating Conditions	-30° C ~ +60° C (-22° F ~ +140° F) / 10%RH~95% RH
Storage Conditions	+5° C ~ +40° C (+41° F ~ +104° F) (daily temperature difference within 15° C/59° F) / 10%RH~95% RH
Ingress Protection	IP67
Vandal Resistance	N/A

Construction

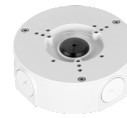
Casing	Metal
Dimensions	244.1mm×79.0mm×75.9mm (9.61"×3.11"×2.99")
Net Weight	0.815Kg (1.80lb)
Gross Weight	1.08Kg (2.38lb)

Ordering Information

Type	Part Number	Description
2MP camera	DH-IPC-HFW5241TP-AS-LED	2MP WDR Bullet AI Network Camera, WDR,PAL
	DH-IPC-HFW5241TN-AS-LED	2MP WDR Bullet AI Network Camera, WDR,NTSC
	IPC-HFW5241TP-AS-LED	2MP WDR Bullet AI Network Camera, WDR,PAL
	IPC-HFW5241TN-AS-LED	2MP WDR Bullet AI Network Camera, WDR,NTSC
Accessories (optional)	PFA130-E	Junction box
	PFA152-E	Pole Mount
	PFA151	Corner Mount

Accessories

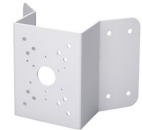
Optional:



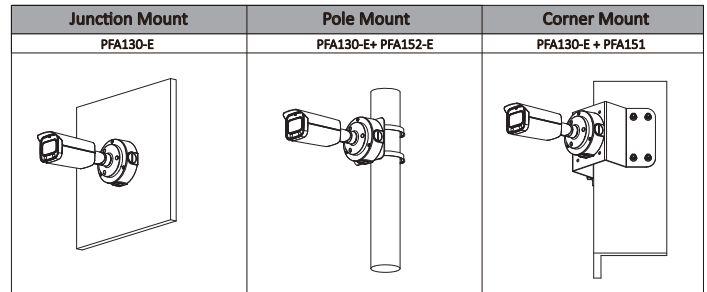
PFA130-E
Junction box



PFA152-E
Pole Mount



PFA151
Corner Mount



Dimensions (mm/inch)

