

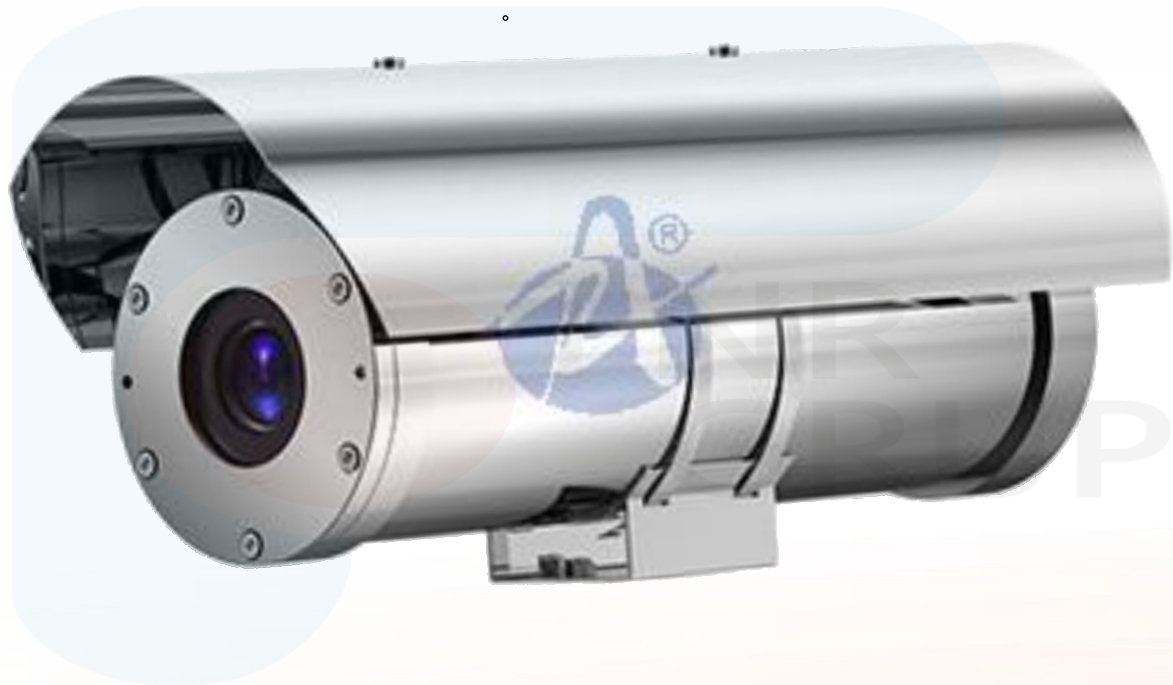
# EXPLOSION PROOF CCTV

ATEX Explosion Proof IP68 CCTV Camera



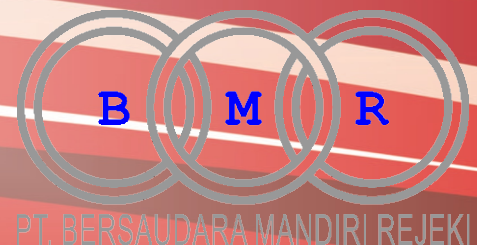
## CZ100B

2MP 30x Explosion Proof CCTV Fixed Network Camera



### PT. BERSAUDARA MANDIRI REJEKI

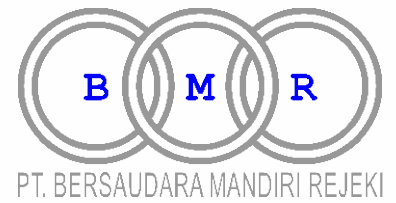
Jl. Cisaranten Baru No.57, Cisaranten Kulon  
Arcamanik Kota Bandung, 40293  
Telp : (022) 63745201 WhatsApp : 0812-2220-6505  
Email : sales@fnrgrup.com  
<https://www.bersaudaramandiri.co.id>



# CZ100B

## ATEX Explosion Proof IP68 CCTV Camera

### 2MP 30x Explosion Proof CCTV Fixed Network Camera



#### Description :

Dengan Sertifikasi yang ketat, Camera ini dirancang untuk digunakan dalam area berbahaya kimia, fasilitas gas dan oli, pabrik pengolahan makanan, dan area berbahaya lainnya, untuk mencegah kerusakan pada peralatan camera dengan menahan panas, percikan api atau api yang dihasilkan, serta suhu yang panas dari luar housing.

Material SS 316L dapat digunakan untuk marine seperti kapal laut, rig offshore, dan industri maritim lainnya.

#### Working Environmental Condition :




- Working Voltage : AC100-240V
- Working Electric Current :  $\leq 1000\text{mA}$
- Environment temperature :  $-25^{\circ}\text{C} \sim +60^{\circ}\text{C}$
- Average relative humidity :  $\leq 95\%$
- Atmospheric Pressure :  $80\text{kPa} \sim 106\text{kPa}$
- Apply to explosive gas atmosphere 1 district / 2 district dangerous ground
- Apply to IIA, IIB, IIC grade explosive gas atmosphere
- Apply to flammability dust environment 20/21/22 district
- Apply to the environment of temperature group T1-T6

#### Features :

- ATEX, IECEx, CNEC, CE, Approved
- Applicable for Gas Zone 1, Zone 2, (Class IIA, IIB, IIC, T1-T6 group) Dust Zone 21, 22.
- Stainless steel 304 or 316L enclosure
- Surface optional electro-polished or painting
- Weather Proof Ip68 (1.2m/45min)
- Wide voltage input: AC100-240V or AC24V
- Strong tempered glass, fit for hydrofluoric acid area
- Intelligent window defroster design
- Auto temperature adjust kit for aggressive area
- High precision wiper, support user-defined
- Auto temperature adjust kit for aggressive area
- Symmetrical balancing design
- Intelligent long focal speed limit, fit for long distance monitoring



### Certificate

ATEX Certificate Mark	  II 2G Ex db II C T6 Gb,  II 2D Ex tb IIIC T80 °C Db
Certificate	Presafe 17 ATEX 11326X, IECEx PRE18.0012X
Standards	IEC/EN60079

### Mechanical

Housing	Stainless steel 304 or 316L
Surface	Optional electro-polish or painting
Ingress protection	IP68 (1.2m/ 45min)
Cable thread hole	2pcs M25×1.5 (or M27*1.25)

### Electrical

Voltage	AC100V~AC240V or AC24V
Power	15W/25W (with thermostat)

### Ambient

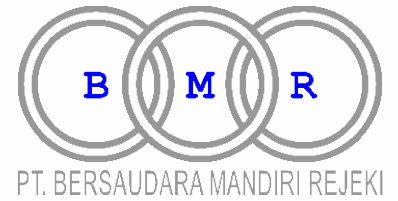
Ambient temperature	-25°~+60°/-40°C~+60°C
Air pressure	80Kpa to 110Kpa
Relative Humidity	≅95% (no condensation)

### Communication

Communication type	RS485
Protocol	Pelco-D, Pelco-P
Communicate Rate	2400~19200bps adjustable
485 Communication	Support



# CZ100B



## ATEX Explosion Proof IP68 CCTV Camera

### 2MP 30x Explosion Proof CCTV Fixed Network Camera

#### Camera

Image Sensor	1/2.8" Sony CMOS
Effective pixel	2.0 Megapixel
Lens	3 ~ 90.0mm, 30x Optical
Min.Illumination	Color: 0.1Lux, B/W:0.01Lux
Day&night	Auto/Color/BW
S/N ratio	>60dB (Enhanced)
Gain Control	Auto/Manual
White Balance	Auto
Iris	Auto/Manual
Electronic shutter	1/50(1/60)s~1/10000 s
Video output	1.0Vp-p 75 Ω
Language	Chinese/English
Screen menu	AWB, Digital noise reduction, Light suppression, Mirror
Gama modulus	0.45
Signal model	PAL/NTSC
Camera Compatibility	ONVIF, P2P function

#### General

Model	CZ100-B
Sun-shield	Optional
Wiper	No
Overall dimension	524*179*208mm
Weight	12.5kg



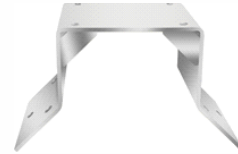
## Relative Product



ZAZ100B



ZAZ100PMB



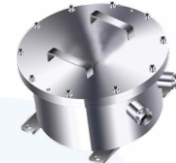
ZAZ100C



ZANXG

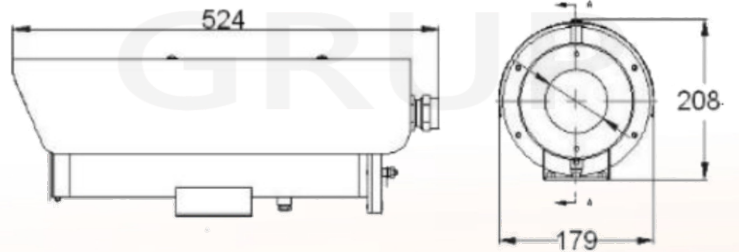
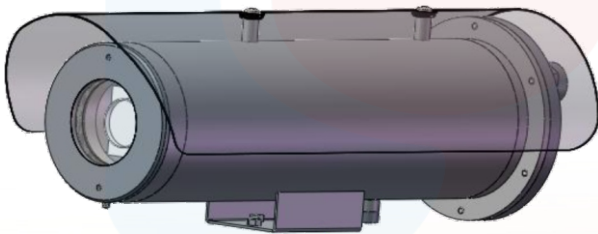


ZA-JXD4Ex Junction box



CZ300 Ex Control Box

## Dimension







**CONTACT PERSON**



**PT. BERSAUDARA MANDIRI REJEKI**



Jl. Cisaranten Baru No.57, Cisaranten Kulon  
Arcamanik Kota Bandung, 40293  
Telp : (022) 63745201  
WhatsApp : 0812-2220-6505  
Email : sales@fnrgrup.com



国家防爆

